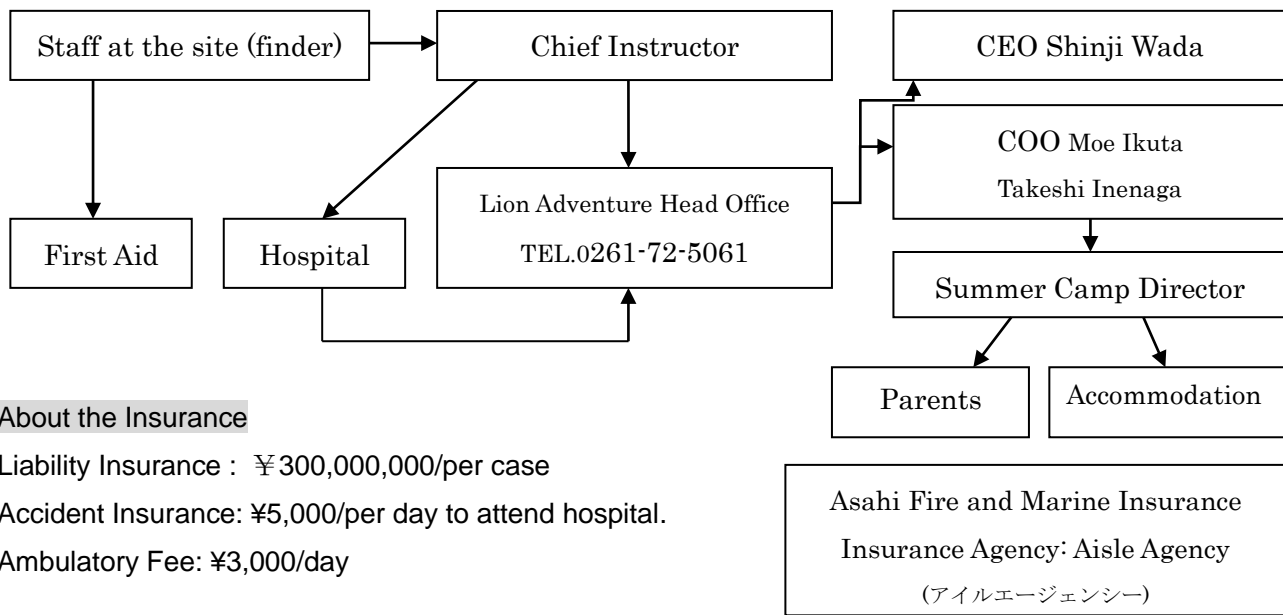


General Emergency Network



About the Insurance

Liability Insurance : ¥300,000,000/per case

Accident Insurance: ¥5,000/per day to attend hospital.

Ambulatory Fee: ¥3,000/day

Asahi Fire and Marine Insurance
Insurance Agency: Aisle Agency
(アイルエージェンシー)

【Hakuba Village Public Organization】

- < Hospital >
- Shitani Clinic 0 2 6 1 - 7 5 - 4 1 7 7
 - Omachi General Hospital 0 2 6 1 - 2 2 - 0 4 1 5
 - Shinmachi Hospital 0 2 6 2 - 6 2 - 3 1 1 1
 - North Alps Medical Center Azumi Hospital
0 2 6 3 - 6 2 - 3 1 6 6
 - Toyoshina Hospital 0 2 6 3 - 7 2 - 3 1 7 0
 - Yokosawa Medical 0 2 6 1 - 7 2 - 2 0 0 8
 - Emergency Clinic 0 1 2 0 - 8 9 - 0 4 2 3

- < Public Organization >
- Hakuba Village Hall 0 2 6 1 - 7 2 - 5 0 0 0
 - Omachi Police Dept. 0 2 6 1 - 2 2 - 1 0 8 8
 - Hakuba Police Box 0 2 6 1 - 7 2 - 2 0 0 9
 - North Alps Fire Dept. 0 2 6 1 - 7 2 - 0 1 1 9

【Role for staff in case of accident/emergency】

Situation	Role
Small injuries (cut, nausea, bloody nose, etc)	<ul style="list-style-type: none"> • First aid from the guide/staff at the site→continue the activity • →Or, take a rest at resting point/base
Spraining ankle or wrist/ get bruises	<ul style="list-style-type: none"> • Ask if its possible to continue the activity. • Take to hospital if the condition gets worse, quickly. • Report to the chief guide and follow the emergency network.
Serious injuries (broken bones, breathing issue, head/back injuries, convulsion, heart issue, etc)	<ul style="list-style-type: none"> • Call 119 • First aid from the guide/staff at the site. • take to the hospital WITH ONE DIRECTOR on ambulance. • Take care other students to prevent panic.